

Human LILRB2/CD85d/ILT4 Protein

Cat. No. LIL-HM3B2

Description

Source	Recombinant Human LILRB2/CD85d/ILT4 Protein is expressed from HEK293 with mFc (IgG1) tag at the C-Terminus. It contains Gln22-His458.
Accession	Q8N423-1
Molecular Weight	The protein has a predicted MW of 73.6 kDa. Due to glycosylation, the protein migrates to 80-110 kDa based on Tris-Bis PAGE result.
Endotoxin	Less than 1EU per µg by the LAL method.
Purity	> 95% as determined by Tris-Bis PAGE > 95% as determined by HPLC

Formulation and Storage

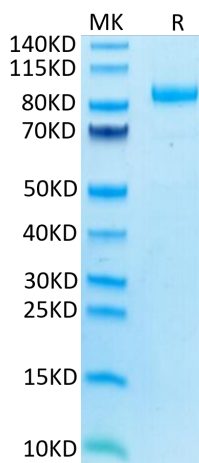
Formulation	Lyophilized from 0.22µm filtered solution in PBS (pH 7.4). Normally 8% trehalose is added as protectant before lyophilization.
Reconstitution	Centrifuge the tube before opening. Reconstituting to a concentration more than 100 µg/ml is recommended. Dissolve the lyophilized protein in distilled water.
Storage	-20 to -80°C for 12 months as supplied from date of receipt. -20 to -80°C for 3-6 months in unopened state after reconstitution. 2-8°C for 2-7 days after reconstitution. Recommend to aliquot the protein into smaller quantities for optimal storage. Please minimize freeze-thaw cycles.

Background

The immunoglobulin-like transcript (ILT) comprise a family of activating and inhibitory type immunoreceptors whose genes are located in the same locus that encodes killer cell Ig-like receptors (KIR). ILT4, also known as LIR-2 and LILRB2, is a type I transmembrane protein expressed primarily on monocytes and dendritic cells (DC). LILRB2 is a receptor for class I MHC antigens. Recognizes a broad spectrum of HLA-A, HLA-B, HLA-C, HLA-G and HLA-F alleles.

Assay Data

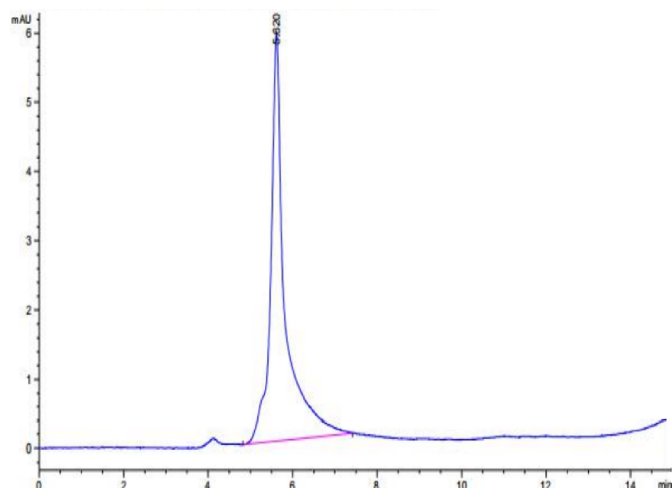
Tris-Bis PAGE



Human LILRB2 on Tris-Bis PAGE under reduced condition. The purity is greater than 95%.

SEC-HPLC

Assay Data

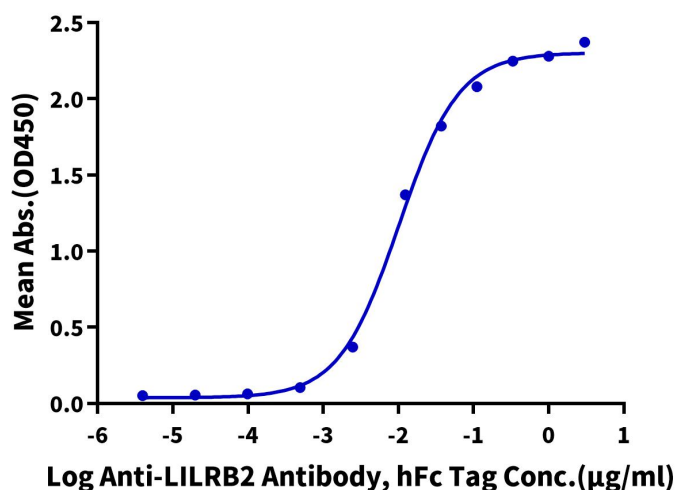


The purity of Human LILRB2 is greater than 95% as determined by SEC-HPLC.

ELISA Data

Human LILRB2, mFc Tag ELISA

0.02µg Human LILRB2, mFc Tag Per Well

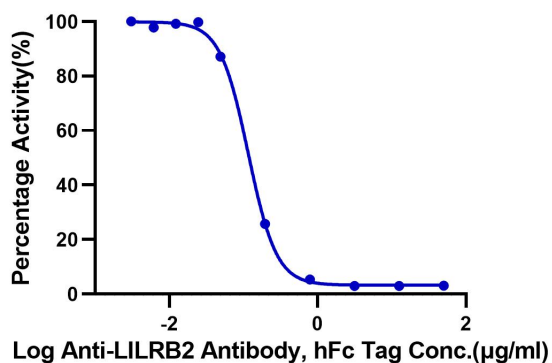


Immobilized Human LILRB2, mFc Tag at 0.2µg/ml (100µl/well) on the plate. Dose response curve for Anti-LILRB2 Antibody, hFc Tag with the EC50 of 10.2ng/ml determined by ELISA (QC Test).

Blocking Data

Inhibition of Human LILRB2 and HLA-G Binding

0.2µg Human LILRB2, mFc Tag Per Well



Serial dilutions of Anti-LILRB2 Antibody were added into Human HLA-G Complex Tetramer, His Tag : Human LILRB2, mFc Tag binding reactions. The half maximal inhibitory concentration (IC50) is 0.11µg/ml.